

# GEARBOX SERVICE CENTRE

Sumitomo Drive Technologies

Motion is the exclusive distributor of Sumitomo Drive Technologies in New Zealand.

Sumitomo combines the products and service expertise of Sumitomo, Hansen & Seisa to provide engineered solutions to industrial power transmission customers. With worldwide coverage, their products are the preferred choice by many of the largest and most recognised global organisations. We understand your drive requirements and through the synergies of our companies, we can provide you with the best solutions available today.

## Specialties

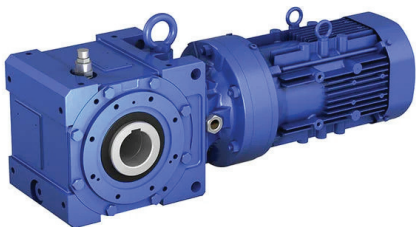
Manufacturing, Assembling, Speed Reducers, Gearmotor, Gearboxes, Precision Drives, Motors, Inverters.

- Manufacture and supply drives from 6 Watt to 6000 Kilowatts
- Provide a comprehensive product range to suit all your power transmission requirements.
- Excellent Engineering and Service Centres (ESC) located in major economies of Asia Pacific with adequate supply of spare parts.



If all the parts are in stock in our facility, for a small fee, we will guarantee same day, 1-day, or 2-day lead times. All standard Cyclo, BBB, HBB, and HSM units are eligible, as are any parts in stock.

This is our commitment to you. If your product is eligible for a quick build, and we fail to meet our commitment, we will waive any additional fees and pay the freight to get you your unit quickly. With a greater than 97% on-time delivery within our quick build program, we are confident we will live up to our promise.



Bevel BuddyBox® 4 Gearmotor



Cyclo® Drive Gearmotor



Helical Shaft Mount Reducer

Request a Quick-Build Product – email : [sumitomo@motion.co.nz](mailto:sumitomo@motion.co.nz)

**MOTION**

# INSPECTIONS

## SUMITOMO HANSEN CAPABILITIES

### STANDARD INSPECTIONS (STRIP & QUOTE)

- Unit cleaned before inspection
- Unit opened & inspection of gear train
- Oil samples taken
- Visual inspection of casing and shafting
- If no major damage detected repair cost calculated
- Quotation will be based on standard replacement of all bearing & seals, gear train will be cleaned, casing cleaned and blasted if required before assembly. A 'Run Test' is carried out and a repaint
  - In-House Engineering & Design Team
  - In-House Manufacturing & Assembly
  - Global Manufacturing Company = Global Support

### INDUSTRIES & APPLICATIONS

- Mining
- Bulk Handling
- Quarrying
- Process Engineering
- Food Manufacturing
- Packaging
- Water Treatment
- Power Generation
- Recycling
- Steel Making

### DETAILED INSPECTIONS (STRIP & QUOTE)

- If evidence of component damage, i.e. surface fatigue, pitting, spalling, shaft distress or breakage is found, then a more detailed inspection is recommended
- All components are stripped and inspected, to determine the cause of damage
- Non-destructive testing can be carried out including case alignment checks
- Case/bore alignment checks will be carried out to ensure all shafts & gears are true
- A detailed fixed price quotation will follow. (No hidden costs)
- All labour & parts will be covered by our Premium Drive Service 24 month warranty

### PRODUCTS

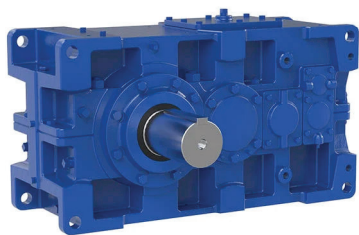
- Mixer Drives
- Conveyer Drives
- Cooling Tower Drives
- Agitators
- Crushers
- Sizers
- Pump Drives
- Turn Tables
- Hoists

### COMPLETE CONDITION REPORT

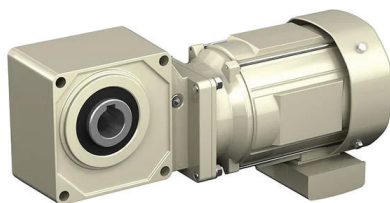
- Fixed Strip & Inspect charge
- No hidden cost for quoting purposes
- Fixed Strip & Inspect charge will be deducted off the final repair cost if the go ahead is given
- Options of Visual Inspection or ND Testing (Non Destructive Test)
- No Load Run Test on completion (standard offer)
- Load test to 150kw available at additional charge if required
- All Sumitomo Hansen units are refurbished using only genuine parts

### Gearbox Repair & Support

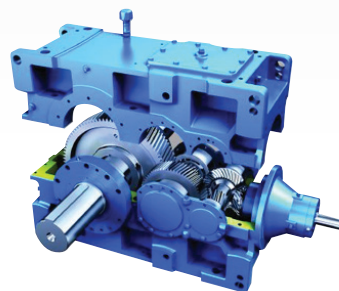
We offer inspection, repair and support services for other makes of gearboxes as well, not just Sumitomo.



Paramax® Reducer



Hyponic® Gearmotor



Gearbox Repair & Support

For more information, contact [jason.kennerley@motion.co.nz](mailto:jason.kennerley@motion.co.nz) / 027 245 7394